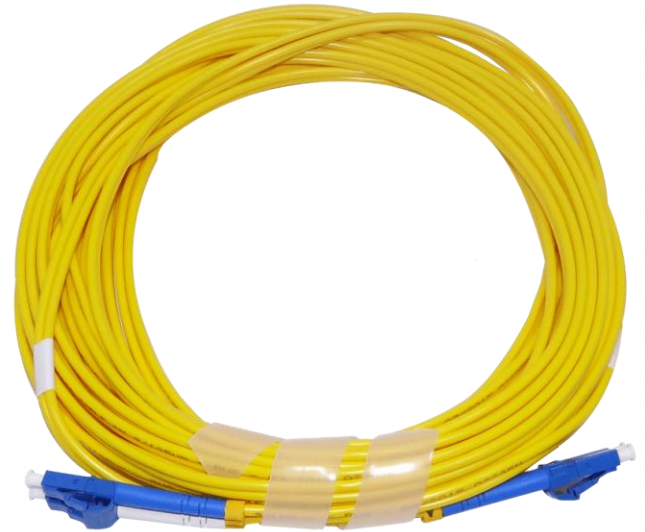
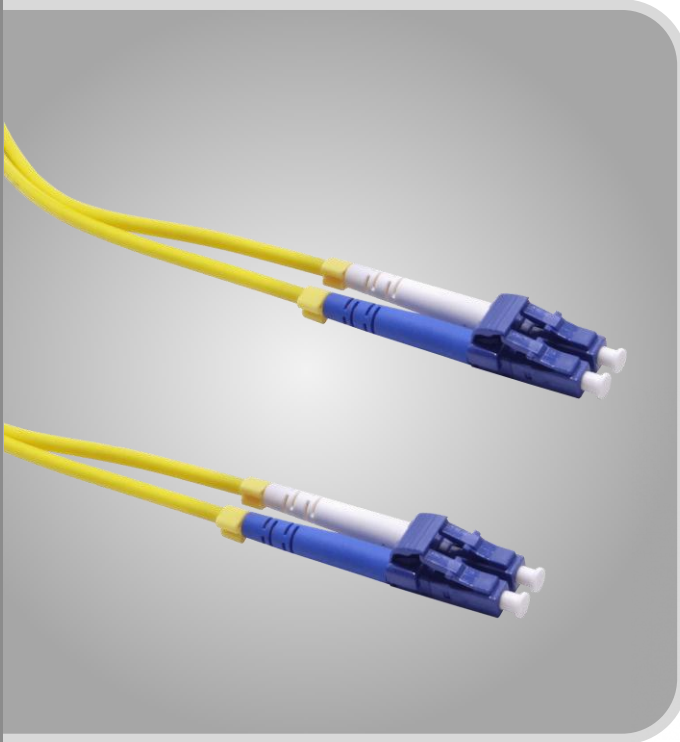


JFSSL10

Jumper Monomodo SM Duplex
 Fibra 9/125um - Longitud 10 mts



Especificaciones técnicas

Fibra LC-LC
 Marca de cable - no
 Cable - PVC / LSZH / OFNP
 Temperatura: -20°C - +70°C

Especial	Monomodo(PC)	Monomodo(APC)
Inserción	<0.30dB	<0.30dB
Retorno	>50dB	>50dB

Duplex, 2mm

