

Aluminum Enclosure



LV Aluminium boxes are suitable for installation, circuit breaking, connection and control of electric and electronic equipments, and find their main application in industrial, automotive, railways, navy, tunnels, parkings, industrial buildings fields ensuring a high mechanical and vibration resistance with IP66 protection degree.

Standard Supply:
Aluminum box PUR seal stainless steel screws, M4 screws

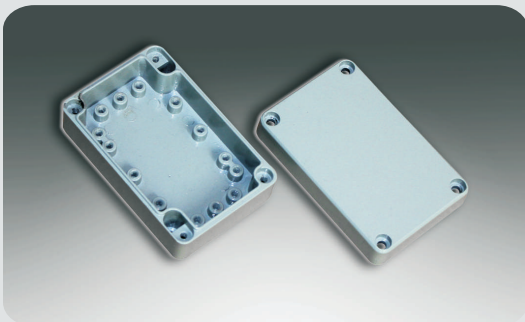
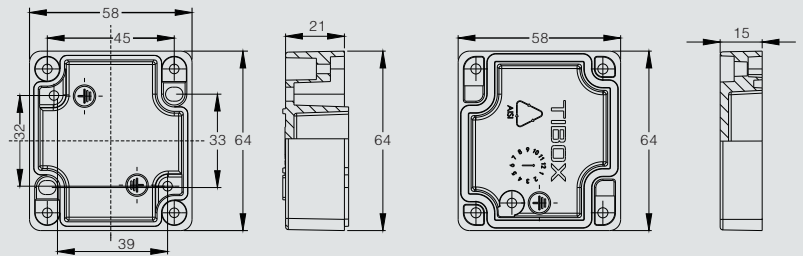
Specification:
Material: AISI 12 DIN1725 Standard
Protection Degree: IP66 EN60529 Standard
Resistance to Impact: >7 Joule EN50014 Standard
Temperature Range: -50°C to 130°C
Paint Finish: Epoxy polyester powder coating
Color: RAL7038

MODEL	W	H	D	MODEL	W	H	D
LV0605	64	58	36	LV1212	125	125	80
LV0906	98	64	36	LV3612	360	120	80
LV1506	150	64	36	Lv2212	220	125	80
LV1106	115	65	55	LV2214-2	220	140	90
LV0807	82	77	57	LV1616-1	160	160	90
LV1208	127	82	57	LV2616	260	160	90
LV1708	175	80	57	Lv3616	360	160	90
LV2508	250	80	57	LV2320	230	200	110
LV1010	100	100	80	LV2823	280	230	110
LV1610-1	160	100	80	LV3323-1	330	230	120
LV2010	200	100	80	LV6031	600	310	110



Model: LV0506

Size: 64X58X36mm



Model: LV0906

Size: 98X64X36mm

